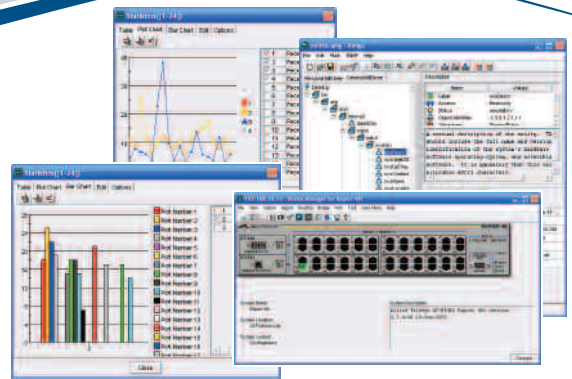


ALLIEDVIEW™-EMS

Network Device Management Software



AlliedView-EMS 3.1 I

Network Device Management Software

Ease of Use

With AlliedView-EMS, you can view details of all the managed Allied Telesis products on your network from a user-friendly, window-based interface. Display the physical view of a device and see color-coded port and module configurations, click on a port to display its communication statistics or even change device settings to improve data flow. All in a matter of minutes, all in an intuitive graphical environment.

Automated Response

With RMON support for Statistics, History, Alarm and Event, it has never been easier to proactively monitor your network. Chart line traffic usage, packet size class, error packet classifications and more to analyze your network's health in real-time and optimize its performance.

Remote Management

To truly manage your network, device monitoring is only half the battle. With AlliedView-EMS, you can configure any supported SNMP Management Information Base (MIB) variable such as full/duplex settings, IP routing, and more.

Flexibility

Java-based AlliedView-EMS has been designed to run in both Unix and Windows environments, either as an add-on to network management solutions for large networks, or as a standalone application for smaller ones.

AlliedView-EMS is a Java-based network device management solution from Allied Telesis. Whether managing a large network distributed across multiple sites, or small networks with only a handful of nodes, AlliedView-EMS provides the tools needed to effectively monitor and proactively manage Allied Telesis' intelligent networking products.

Lower Cost of Ownership

The ultimate value of AlliedView-EMS lies in lowering the Total Cost of Ownership (TCO) of your network. Drive down your network management costs by leveraging the monitoring, analysis and configuration tools. Reduce your downtime costs by identifying problems quickly. Finally, minimize your training costs by taking advantage of AlliedView-EMS' platform independence; interoperability with HP OpenView, Tivoli NetView, Ipswitch WhatsUp and SNMPc; and an intuitive, easy-to-understand graphic interface.

Key Features

- Intuitive graphical interface
- Drill-down functionality
- MIB browser
- MIB compiler
- GUI snapshot utility
- RMON 4 group support
- Supports NMS alarms
- Supports SNMP v1, v2c and v3
- VLAN management
- QoS management
- Multi-platform
- HP OpenView, Tivoli NetView, Ipswitch WhatsUp and SNMPc interoperability
- Supports Allied Telesis managed devices

Free 30-Day Trial

To receive a free 30-day evaluation copy of AlliedView-EMS, visit www.alliedtelesis.com today.

System Requirements

Windows 2000 (SP3 or later)

Windows XP (SP1 or later)

Windows 2003

64MB RAM (128MB+ recommended)
200MB disk space during installation
100MB disk space during operation
166MHz Pentium-compatible processor
(400MHz+ recommended)

Sun OS 5.8/Solaris 8

128MB RAM (256MB recommended)
220MB disk space during installation
110MB disk space during operation
15MB minimum swap partition
Ultra 10 or higher processor

HP-UX 11

128MB RAM (256MB recommended)
390MB disk space during installation
195MB disk space during operation
15MB minimum swap partition
HP 9000 workstations
HP Visualize workstations

Display:

1024 x 768 or above
(64K colors or more)

NMS platforms supported:

HP OpenView Network Node Manager
6.20, 7.0

Castle Rock SNMPc 5.1.6c, 6.0,
7.0 and 7.1

Tivoli NetView 7.1.3

Ipswitch WhatsUp Professional 2006

Devices Supported

Device support is updated frequently, please contact
your Allied Telesis sales representative or visit
www.alliedtelesis.com to get all the latest updates.

Hubs

AT-FH12u
AT-FH824u

Routers

AT-AR240E
AT-AR250E
AT-AR255E
AT-AR300
AT-AR300L
AT-AR320
AT-AR350
AT-AR370S
AT-AR370U
AT-AR410
AT-AR415S
AT-AR440S
AT-AR441S
AT-AR442S
AT-AR450S
AT-AR720
AT-AR725
AT-AR725 (-48VDC)
AT-AR740
AT-AR740 (-48VDC)
AT-AR745
AT-AR745 (-48VDC)
AT-AR750S
AT-AR750S-DP
AT-AR770S

Residential Gateways

AT-RG213FX
AT-RG213TX
AT-RG613BD
AT-RG613LH
AT-RG613SH
AT-RG613TX
AT-RG634A
AT-RG644B
AT-RG656BD

Layer 2 Switches

AT-8000/8POE
AT-8000S/16
AT-8000S/24
AT-8000S/24POE
AT-8000S/48
AT-8000S/48POE
AT-8012M
AT-8012M-QS
AT-8016F/MT
AT-8016F/SC
AT-8016F/ST
AT-8024
AT-8024GB
AT-8024M
AT-8026FC
AT-8026T
AT-8088/MT
AT-8088/SC
AT-8124
AT-8124XL (v2)
AT-8216FXL/SC
AT-8224XL
AT-8324
AT-8324SX
AT-8326GB
AT-8350GB
AT-8400
AT-8403
AT-8411
AT-8412/MT
AT-8412/SC
AT-8413GB/T
AT-8414/SC
AT-8414/ST
AT-9000/24
AT-9006SX/SC
AT-9006T
AT-9410GB
12 slot chassis
AT-8400 fan tray
8 port (RJ-45) line card
4 port (MT-RJ) line card
4 port (SC) line card
2 port (GBIC/RJ-45) line card
4 port (SC) line card
4 port (ST) line card

Layer 2+ Switches

AT-8516F/SC
AT-8524M
AT-8524POE
AT-8550GB
AT-8550SP
AT-8724XL
AT-8724XL (-48VDC)
AT-8748XL
AT-8748XL (-48VDC)
AT-9408LC/SP
AT-9424T/GB
AT-9424T/SP

Layer 3 Switches

AT-8624POE
AT-8624T/2M
AT-8648T/2SP
AT-8824
AT-8848
AT-9424T
AT-9424Ts
AT-9424Ts/XP
AT-9448T/XP
AT-9448Ts/XP
Rapier 16F/MT
Rapier 16F/SC
Rapier 16F/MT
Rapier 16F/SC
Rapier 24
Rapier 24i
Rapier 48
Rapier 48i
Rapier 48w
Rapier G6
Rapier G6FLX/SC
Rapier G6FSX/MT-RJ
Rapier G6FSX/SC

Layer 3+ Switches

AT-8948
AT-9724TS
AT-9748TS/XP
AT-9924SP
AT-9924T
AT-9924T/4SP
AT-9924Ts
AT-x900-24XS
AT-x900-24XT
AT-x900-24XT-N
AT-x900-48FE

Layer 3/4 Switches

AT-9812T
AT-9812T (-48VDC)
AT-9812Tf
AT-9816GB
AT-9816GB (-48VDC)
AT-9816GF

Layer 4+ Switches

AT-SB4104 4 slot AC chassis
AT-SB4104 (-48VDC) 4 slot DC chassis
AT-SB4108 8 slot AC chassis
AT-SB4108 (-48VDC) 8 slot DC chassis
AT-SB4151 Fan tray for 4 slot model
AT-SB4152 Fan tray for 8 slot model
AT-SB4211 Switch controller
AT-SB4215 Bandwidth expander (4 slot model only)
AT-SB4311 48 port 10/100TX (RJ-45) line card
AT-SB4352 32 port 100FX (MT-RJ) line card
AT-SB4411 8 port 10/100/1000T (RJ-45) line card
AT-SB4412 24 port 10/100/1000T (RJ-45) line card
AT-SB4441 8 port 1000X (GBIC) line card
AT-SB4442 24 port 1000X (SFP) line card
AT-SB4451 8 port 1000SX (SC) line card
AT-SB4452 8 port 1000SX (MT-RJ) line card
AT-SB4461 8 port 1000LX (SC) line card
AT-SB4462 8 port 1000LX (MT-RJ) line card
AT-SB4541 1 port 10GBASE-R line card

Media Converters

AT-CV1200 Convertion™ 2-slot chassis
AT-CV5000 Convertion 18-slot chassis
AT-CM201 10/100TX - 100FX
AT-CM202 10/100TX - 100FX
AT-CM212A/I 10/100TX - 100FX
AT-CM212B/I 10/100TX - 100FX
AT-CM2K05 10/100/1000T - 1000FX
AT-CM705 T1/E1 + 10/100TX
AT-CV101 100TX - 100FX
AT-CV102 100TX - 100FX
AT-CV1K55 1000FX - 1000FX
AT-MCF06 family
AT-MCF12 family
AT-MCF106 family
AT-MCF112 family
AT-MPB3000 MPB 12-slot chassis
AT-MCM100-01SC Single channel 100TX - 100FX converter
AT-MCM100-01ST Single channel 100TX - 100FX converter
AT-MCM100-01SMR Single channel 100TX - 100FX converter
AT-MCM100-01SMRF15 Single channel 100TX - 100FX converter
AT-MCM100-02SC Dual channel 100TX - 100FX converter
AT-MCM100-02ST Dual channel 100TX - 100FX converter
AT-MCM100-02SMR Dual channel 100TX - 100FX converter
AT-MCM100-02SMRF15 Dual channel 100TX - 100FX converter
AT-MCM110-01SC Single channel 10/100TX - 100FX converter
AT-MCM110-01ST Single channel 10/100TX - 100FX converter
AT-MCM110-01SMR Single channel 10/100TX - 100FX converter
AT-MCM110-01SMRF15 Single channel 10/100TX - 100FX converter
AT-MCM110-02SC Dual channel 10/100TX - 100FX converter
AT-MCM110-02ST Dual channel 10/100TX - 100FX converter
AT-MCM110-02SMR Dual channel 10/100TX - 100FX converter
AT-MCM110-02SMRF15 Dual channel 10/100TX - 100FX converter
AT-MCM1000S-LX1 1000SX - 1000LX converter
AT-MCM1000S-LXF15 1000SX - 1000LX converter
AT-MCM1000T-LX1 1000T - 1000LX converter
AT-MCM1000T-LXF15 1000T - 1000LX converter
AT-MPB100TF/2 Remotely managed 10/100TX-FX converter/access device
AT-MPB100TF/15 Remotely managed 10/100TX-FX converter/access device
AT-MPB100TF5/15 Remotely managed 10/100TX-FX converter/access device
AT-MPB1000SL/10 1000SX - 1000LX GbE converter/extender
AT-MPB1010TL/10 1000SX - 1000LX GbE converter/extender
AT-MPB1010TL5/10 1000T - 1000LX GbE converter/extender
AT-PBC18 PowerBlade 18-slot chassis

AT-PB13
AT-PB14
AT-PB15
AT-PB101
AT-PB102
AT-PB103/1
AT-PB103/2
AT-PB201
AT-PB202
AT-PB202/1
AT-PB202/3
AT-PB202/4
AT-PB301
AT-PB1001/1
AT-PB1001/3
AT-PB1005G

PowerBlade media converter module
PowerBlade media converter module
PowerBlade media converter module
PowerBlade media converter module
PowerBlade media converter module
PowerBlade media converter module
PowerBlade media converter module
PowerBlade switch module
PowerBlade switch module
PowerBlade switch module
PowerBlade switch module
PowerBlade switch module
PowerBlade switch module
PowerBlade media converter module
PowerBlade media converter module
PowerBlade media converter module
PowerBlade media converter module

Wireless

AT-WA7400
AT-WA7500
AT-WA7501

Enterprise wireless a, b, g access point (indoor)
Enterprise wireless a, b, g access point IP54 enclosure (outdoor)

Gigabit Interface Converters (GBICS)

AT-G8 series
AT-SP series
AT-XP series

Optional Gigabit Expansion Modules (Uplink Modules)

AT-A14
AT-A15SX
AT-A15LX
AT-A35LX/SC
AT-A35SX/SC
AT-A39T
AT-A42/GBIC
AT-A46
AT-A47
AT-A60
AT-A61
AT-A62
AT-B15/LX
AT-B15/SX
AT-XEM-125
AT-XEM-12T
AT-XEM-1XP
AT-XP9700

Port Interface Cards (PICs)

AT-AR020
AT-AR021S
AT-AR021U
AT-AR022
AT-AR023
AT-AR024
AT-AR026
AT-AR027

Network Service Modules (NSMs)

AT-AR040
AT-AR041
AT-AR042

Optional Fast Ethernet Expansion Modules (Uplink Modules)

AT-A16
AT-A17
AT-A18
AT-A19
AT-A40/MT
AT-A40/SC
AT-A41/MT
AT-A41/SC
AT-A45/MT
AT-A45/SC
AT-A45/SC-SM15
AT-B17

Power Accessories

AT-BRPS8000
AT-PPS5033A
AT-PPS5033D
AT-PBPWRAC
AT-PWR10
AT-PWR11
AT-PWR14
AT-PWR3004
AT-PWR3104
AT-PWR3204
AT-PWR8000
AT-PWR9700
AT-RG005
AT-RPS740
AT-RPS3004
AT-RPS3104
AT-RPS3204
AT-RPS8000
AT-RPS9000
AT-RPS9700

Management Modules

AT-8401
AT-BMGMT
AT-CVSM01
AT-MCM02
AT-MMM-01
AT-PBM02
AT-SB4211

For AT-8400 chassis
For AT-8324SX
For AT-CV5000
For MCF10 and MCF100 series
For standalone AT-MPB3000 system
For AT-PBC18 chassis
For SB4000 series chassis

Stacking Modules

AT-BSTACK1
AT-STACK8
AT-STACKM

Ordering Information

AT-ALLIEDVIEW-EMSV3

AlliedView-EMS v3

Order number: 990-000495-00

AT-AVEMSLICENSE-UP

AlliedView-EMS license upgrade to current version

Order number: 980-000036

USA Headquarters | 19800 North Creek Parkway | Suite 100 | Bothell | WA 98011 | USA | T: +1 800 424 4284 | F: +1 425 481 3895

European Headquarters | Via Motta 24 | 6830 Chiasso | Switzerland | T: +41 91 69769.00 | F: +41 91 69769.11

Asia-Pacific Headquarters | 11 Tai Seng Link | Singapore | 534182 | T: +65 6383 3832 | F: +65 6383 3830

www.alliedtelesis.com

© 2008 Allied Telesis Inc. All rights reserved. Information in this document is subject to change without notice. All company names, logos, and product designs that are trademarks or registered trademarks are the property of their respective owners.

617-00552 Rev. P